

The Children and Young People's Plan

A Consultation on behalf of East Sussex County Council

Prepared by:

SMSR Ltd.
51/52 Market Place
Hull
HU1 1RQ

Tel: 01482 211200
Fax: 01482 211201

E-mail: info@smsr.co.uk
Website: www.smsr.co.uk

***Celebrating over 15 years of
Excellence in Consultation
1991 - 2006***

March 2006

Contents Page

1.0	Summary	3
2.0	Introduction	5
3.0	Methodology	5
4.0	Sample	6
5.0	Results	7
	Staying Safe	7
	Being Healthy	15
	Enjoyment and Achievement	23
	Making a Positive Contribution	33
	Quality of Life	37
	Feedback	41
	Demographics	43
	Appendices	50

1.0 Summary

Staying Safe

- 1.1 The majority of respondents felt safe or very safe in their area, although a fifth said they felt neither safe nor unsafe. It was actually the younger age groups and the male respondents that indicated higher levels of safety. Respondents from the Rother area also felt the safest.
- 1.2 It was a very similar picture for the response to feelings of safety at school; however, it was the older age groups that felt safer in this environment. Respondents from Eastbourne and Hastings indicated the highest levels of safety.
- 1.3 Overall, large gangs of people and suspicious people were cited as the main reason for feeling unsafe. The younger age groups expressed the most concern about the volume of traffic and speeding cars. Bullying was also mentioned, although more so by the male respondents. More visible policing and better street lighting were considered the most effective answer to the problem.

Being Healthy

- 1.4 The majority of interviewees felt either well or very well and they also said they felt healthy or very healthy, however a fifth did say they felt neither healthy nor unhealthy. Just a small minority felt unwell or unhealthy. A higher number of males said they felt well or healthy compared to the females.
- 1.5 Smoking, exam stress and home life were cited as the most important issues that affected their health. Female respondents are more likely to attribute exam stress (31%) and home life (26%) as factors that affect their health compared to the male respondents (27% and 20% respectively).
- 1.6 More than half of respondents said that healthier eating habits would improve their own health or their mates' health. More exercise and more action to help people stop smoking were also cited as key actions. A higher percentage of younger respondents and females mentioned healthier eating compared to those aged 11 and over, whereas the over 11's focussed more on the issue of smoking and better sporting equipment.

Enjoyment and Achievement

- 1.7 More than half of all respondents aged 11 years and over felt they were doing well at school, however a third of respondents rated their performance as average. Results were more positive in the Hastings area and from the female respondents.
- 1.8 Removing distractions from the class was considered the most important factor for improving the situation (higher % of 16+), others said it was to concentrate or listen more (higher % of 5 – 11) or receiving more help or advice.

- 1.9 Almost half of respondents (11+ only) said they wanted more activities to do and more than a third said they wanted loads more to do. Sporting activities, youth clubs, football and swimming were mentioned the most frequently. The 5 – 11 year old age groups were much more likely to suggest the three sports related activities. Cinemas and Bowling alleys were mentioned more frequently by the oldest age group.
- 1.10 More football related activities and a skate park are more frequently suggested by the male respondents and performing arts and shopping are mentioned more often by female respondents. However, more surprising is that a significantly higher percentage of males mentioned sports facilities (38% compared to 27%) yet more females mentioned swimming (16% compared to 9%) and youth clubs (25% compared to 13%).

Making a positive contribution

- 1.11 Almost two-thirds of respondents never helped out in their community; however, the remaining third did make a regular contribution and a fifth of all those aged 11 and over said that they helped someone with special needs.

Quality of Life

- 1.12 Over two-thirds of respondents rated where they live as either good or really good, this was higher with the younger age groups and the Eastbourne respondents.
- 1.13 When asked for how the town area could be improved the most frequent responses were:
- More things to do / places to go for young people
 - Cleaner streets
 - Controlling anti-social behaviour
 - More / better shops
 - Better environment / atmosphere
- 1.14 Cleaner streets and less speeding traffic was a priority for the 5 – 11 year olds and more things to do or places to go were a priority for the older age groups.

Feedback

- 1.15 A letter through the post was considered the most effective method of communicating changes.

2.0 Introduction

- 2.1 In November 2005 the County Council carried out a consultation of children and young people for the Children and Young People's Plan. This took a number of approaches to gather information from young people both quantitatively and qualitatively. These approaches were:
- Collation of responses from past consultation exercises
 - Use of already planned events, specifically through Straight to the Top 2
 - Use of age related leaflets as a prompt to staff to carry out consultation with children and young people through targeted organizations
 - Use of the leaflet in a web based format to consult with a wider range of young people
- 2.2 The leaflets were designed for three age groups (under 11, 11 – 16 and 16 – 19); different images and language were used as was appropriate to each age group. Despite the differences in presentation all three leaflets asked the same direct questions and provided opportunities for the children and young people to give us more open, qualitative answers. Each batch of leaflets was sent out with a briefing note for staff to use to encourage the children and young people to discuss the issues and give detailed qualitative feedback, rather than just fill out the tick boxes.
- 2.3 The distribution of the leaflets was carried out through mailings to schools and the voluntary sector and through targeted work with specific groups of young people (Looked After, Black and Minority Ethnic, Teenage Parents, Young Offenders, LDD). A poster was displayed in libraries to direct library users to the online version; this was also promoted in local and national press (BBC website).
- 2.4 In January 2006 East Sussex County Council commissioned Social and Market Strategic Research (SMSR) Ltd, an independent research company to undertake a robust coding process, input the questionnaire, analyse the results and write a report.

3.0 Methodology

- 3.1 The consultation was undertaken using a questionnaire that was designed by East Sussex County Council. The questionnaire was designed and administered as a self completion survey.
- 3.2 The consultation ran from the 8th November 2005 to 31st January 2006
- 3.3 It should be noted that the methodology proved successful and the Council received a positive response from a number of schools contacted.
- 3.4 A copy of the questionnaires can be found in the appendices.

4.0 Sample

- 4.1 In all 17,000 leaflets were distributed to 67 organisations and a total of 4,260 surveys were completed from 38 different organisations. This is a return rate of 25% which is a good response rate for this type of consultation.
- 4.2 The surveys were undertaken across most areas of the County. A full breakdown of the demographics can be found in the appendices.
- 4.3 It should be noted that when the results are discussed within the report, often percentages will be rounded up or down to the nearest one per cent. Therefore occasionally figures may add up to 101% or 99%. The full specific breakdown can be seen in the appendices.
- 4.4 A cross analysis was undertaken by ethnicity and due to the low figures of non-white respondents no comparisons have been included in this report.

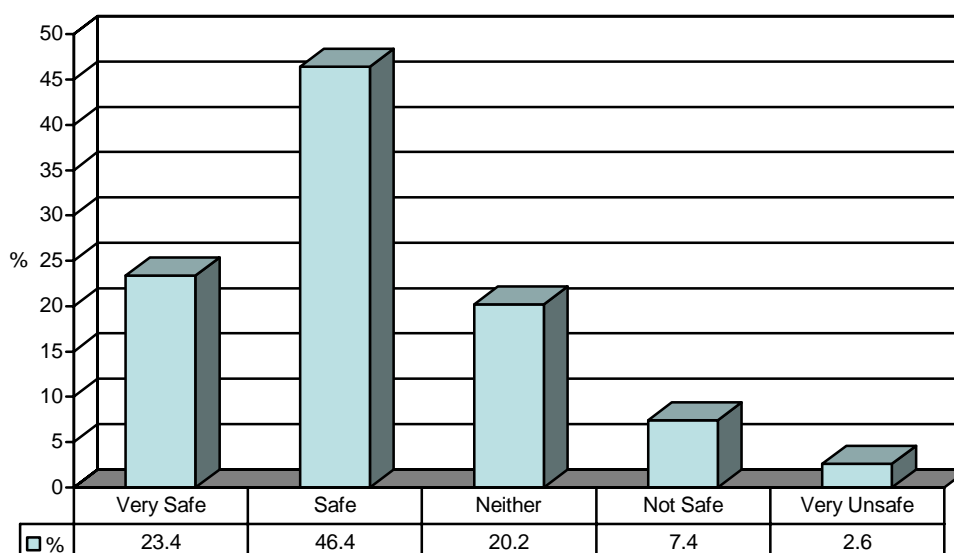
5.0 Results

Staying Safe

i) How Safe Do You Feel in Your Area

Overall

5.1 Respondents of all age groups were asked how safe they feel in their area. Almost 70% indicated a level of safety as 46% said they felt 'safe' and 23% said 'very safe'. However, 10% of respondents felt unsafe in their area and 20% felt neither safe nor unsafe.



(Base Number: 4231)

Age

5.2 The following table shows the results by the three age brackets and shows that it is the younger age group that feels the safest in their area.

How safe do you feel in the area?						
	5-11		11-16		16+	
	Count	Column N %	Count	Column N %	Count	Column N %
Very safe	595	36.3%	385	15.2%	12	19.7%
Safe	606	37.0%	1328	52.4%	28	45.9%
Neither safe nor unsafe	238	14.5%	604	23.9%	11	18.0%
Not safe	131	8.0%	175	6.9%	8	13.1%
Very unsafe	68	4.2%	40	1.6%	2	3.3%
Total	1638	100.0%	2532	100.0%	61	100.0%

Area

- 5.3 The following table shows how safe / unsafe respondents felt in their area by District / Borough. Respondents in the Rother District felt the safest. There were no significant differences in terms of those feeling unsafe.

How safe do you feel in the area?										
	Lewes		Eastbourne		Wealden		Rother		Hastings	
	Count	%	Count	%	Count	%	Count	%	Count	%
Very safe	127	18.5%	134	26.9%	97	14.6%	161	26.5%	65	20.7%
Safe	339	49.3%	220	44.1%	323	48.6%	306	50.4%	149	47.5%
Neither safe nor unsafe	162	23.6%	85	17.0%	177	26.6%	88	14.5%	59	18.8%
Not safe	48	7.0%	37	7.4%	53	8.0%	41	6.8%	29	9.2%
Very unsafe	11	1.6%	23	4.6%	15	2.3%	11	1.8%	12	3.8%
Total	687	100.0%	499	100.0%	665	100.0%	607	100.0%	314	100.0%

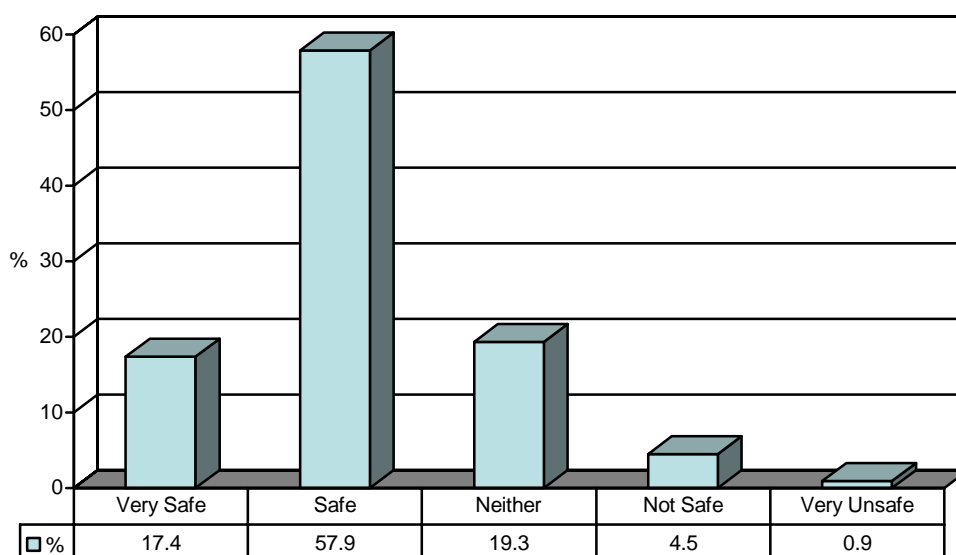
Gender

- 5.4 A higher percentage of male respondents felt safe or very safe (72%) compared to female respondents (68%).

ii) How Safe Do You Feel Where You Go to School/College (11+ Only)

Overall

5.5 Respondents aged over 11 years were asked how safe they feel at their school, college or work. Over 75% indicated a level of safety and 5% said they felt unsafe at their school, college or work. The chart below shows the overall results.



(Base Number: 2566)

Age

5.6 The following table shows the results by the two age brackets that were applicable for this question. The 16+ respondents indicated higher levels of safety.

How safe do you feel where you go to school/college etc?						
	5-11		11-16		16+	
	Count	Column N %	Count	Column N %	Count	Column N %
Very safe	n/a	n/a	435	17.4%	12	20.3%
Safe	n/a	n/a	1446	57.7%	39	66.1%
Neither safe nor unsafe	n/a	n/a	490	19.5%	5	8.5%
Not safe	n/a	n/a	113	4.5%	3	5.1%
Very unsafe	n/a	n/a	23	.9%	0	.0%
Total	n/a	n/a.	2507	100.0%	59	100.0%

Area

- 5.7 The following table shows how safe / unsafe respondents felt where they went to school or college by District / Borough. Respondents who went to school / college in Eastbourne and Hastings felt the safest compared to other areas.

How safe do you feel where you go to school/college etc?										
(11+ only)	Lewes		Eastbourne		Wealden		Rother		Hastings	
	Count	%	Count	%	Count	%	Count	%	Count	%
Very safe	98	17.2%	19	15.0%	92	16.3%	58	18.8%	49	27.2%
Safe	307	54.0%	88	69.3%	337	59.9%	180	58.4%	100	55.6%
Neither safe nor unsafe	129	22.7%	17	13.4%	110	19.5%	54	17.5%	24	13.3%
Not safe	32	5.6%	3	2.4%	20	3.6%	13	4.2%	5	2.8%
Very unsafe	3	.5%	0	.0%	4	.7%	3	1.0%	2	1.1%
Total	569	100.0%	127	100.0%	563	100.0%	308	100.0%	180	100.0%

Gender

- 5.8 There were no significant gender differences.

iii) What Makes You Feel Unsafe?

Overall

5.9 The following table shows the main five aspects that respondents said contributed to feeling unsafe. Almost a fifth of respondents (19%) said that large groups or gangs make them feel unsafe. Volume of traffic was also significant as 13% mentioned this as a factor that made them feel unsafe.

	Cases	%
Large groups/gangs	597	19.3%
Suspicious/bad people	526	17.0%
Volume of traffic	396	12.8%
Nothing – I feel safe	280	9.1%
Dark alleyways/street	275	8.9%
Chavs	257	8.3%
Drunks	253	8.2%
Bullying	211	6.8%
Anti Social Behaviour	211	6.8%

(Base number: 3090)

Age

5.10 The following chart shows that a significant number of those aged 5 – 11 were more fearful of the volume of traffic compared to the older age groups. 'Chavs' were also mentioned frequently by those aged 11 and over.

What makes you feel unsafe? (Top 5 responses)						
	5-11		11-16		16+	
	Count	Column N %	Count	Column N %	Count	Column N %
Large groups / gangs	91	9.4%	497	23.9%	9	20.9%
Suspicious / bad people	119	12.3%	404	19.4%	3	7.0%
Volume of traffic	247	25.5%	148	7.1%	1	2.3%
Nothing - I feel safe	126	13.0%	147	7.1%	7	16.3%
Dark alleyways / streets	72	7.4%	197	9.5%	6	14.0%

Area

- 5.11 The table below shows the main reasons for feeling unsafe by area. Large gangs were less of a worry in Eastbourne and Hastings compared to other Districts / boroughs. Suspicious / bad people were more of a concern for respondents in Wealden.

What makes you feel unsafe? (Top 5 responses)										
	Lewes		Eastbourne		Wealden		Rother		Hastings	
	Count	%	Count	%	Count	%	Count	%	Count	%
Large groups / gangs	136	24.0%	54	14.6%	111	20.5%	92	21.4%	38	15.9%
Suspicious / bad people	97	17.1%	60	16.2%	125	23.1%	53	12.4%	38	15.9%
Volume of traffic	61	10.8%	63	17.0%	48	8.9%	78	18.2%	37	15.5%
Nothing - I feel safe	44	7.8%	40	10.8%	27	5.0%	47	11.0%	23	9.6%
Dark alleyways / streets	60	10.6%	32	8.6%	50	9.2%	45	10.5%	17	7.1%

Gender

- 5.12 Female respondents mentioned large groups or gangs, suspicious or bad people and dark alleyways more frequently than the male respondents and male respondents mentioned bullying (10%) more frequently than female respondents (6%).

iv) What might sort it out (11+ only)*Overall*

5.13 Respondents over 11 years old were also asked for their opinions on what should be done to make them feel safer. The percentage of respondents (36%) who suggested 'more visible policing' is much higher than the percentage of those who suggested other actions. The table below shows the main suggestions to this question and a full list can be found in the appendices.

	Cases	%
More visible policing	644	36.0%
Nothing	180	10.1%
More/better street lighting	143	8.0%
More for young people to do / places to go	171	9.6%
Security	98	5.5%

(Base number: 1788)

Age

5.14 The following table shows this question analysed by the two different age groups:

What do you think might sort it out? (Top 5 responses)						
	5-11		11-16		16+	
	Count	Column N %	Count	Column N %	Count	Column N %
More visible policing	n/a	n/a	632	35.9%	12	41.4%
Nothing	n/a	n/a	179	10.2%	1	3.4%
More / better street lighting	n/a	n/a	138	7.8%	5	17.2%
More for young people to do / go	n/a	n/a	169	9.6%	2	6.9%
Security	n/a	n/a	96	5.5%	2	6.9%

Area

- 5.15 The table below shows suggestions for improving feelings of safety by District / Borough. More visible policing was the main suggestion in all areas. A slightly greater percentage of respondents in Lewes suggested more / better street lighting compared to other areas although overall, there were no significant differences.

What do you think might sort? (Top 5 responses)										
(11+ only)	Lewes		Eastbourne		Wealden		Rother		Hastings	
	Count	%	Count	%	Count	%	Count	%	Count	%
More visible policing	145	33.3%	37	42.0%	151	38.3%	84	38.5%	42	32.3%
Nothing	39	8.9%	7	8.0%	41	10.4%	18	8.3%	14	10.8%
More / better street lighting	46	10.6%	3	3.4%	31	7.9%	18	8.3%	8	6.2%
More for young people to do / places to go	61	14.0%	9	10.2%	31	7.9%	27	12.4%	9	6.9%
Security	20	4.6%	8	9.1%	25	6.3%	17	7.8%	6	4.6%

Gender

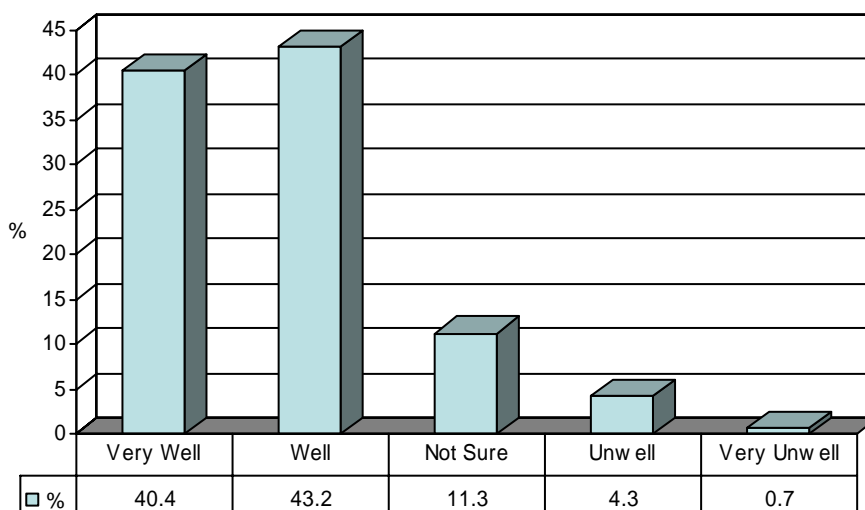
- 5.16 Male respondents were much more likely to suggest more visible policing (40%) than female respondents (32%) and a higher percentage of female respondents (13%) suggested the need for more places for young people to go and more activities compared to male respondents (6%).

Being Healthy

i) How Well Do You Usually Feel? (5-11 Only)

Overall

5.17 Almost 84% of respondents aged between 5 to 11 years of age said that they usually felt either very well (40%) or well (43%), with only 5% that indicated they felt unwell or very unwell. The chart below shows the overall results.



(Base number: 1626)

Age

5.18 There are no significant differences between the two age brackets:

Are you doing as well as you think?						
	5-11		11-16		16+	
	Count	Column N %	Count	Column N %	Count	Column N %
Very well	n/a	n/a	330	13.1%	8	13.1%
Well	n/a	n/a	1096	43.6%	25	41.0%
Average	n/a	n/a	841	33.5%	21	34.4%
Not well	n/a	n/a	199	7.9%	7	11.5%
Badly	n/a	n/a	45	1.8%	0	.0%
Total	n/a	n/a	2511	100.0%	61	100.0%

Area

5.19 The following table shows how well respondents aged 5 to 11 years felt in each District / Borough. There were no significant differences.

How well do you usually feel?										
(5-11 only)	Lewes		Eastbourne		Wealden		Rother		Hastings	
	Count	%	Count	%	Count	%	Count	%	Count	%
Very well	41	36.0%	157	42.9%	34	38.6%	114	38.9%	47	36.2%
Well	55	48.2%	161	44.0%	39	44.3%	128	43.7%	67	51.5%
Not sure	10	8.8%	34	9.3%	12	13.6%	33	11.3%	14	10.8%
Unwell	8	7.0%	12	3.3%	3	3.4%	15	5.1%	2	1.5%
Very unwell	0	.0%	2	.5%	0	.0%	3	1.0%	0	.0%
Total	114	100.0%	366	100.0%	88	100.0%	293	100.0%	130	100.0%

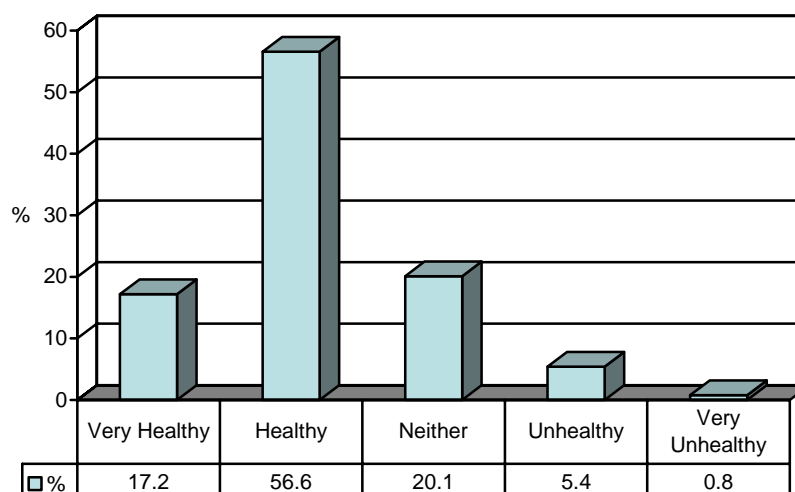
Gender

5.20 A higher number of males said that they felt very well (43%) compared to female respondents (38%).

Do you feel healthy? (11+ only)

Overall

5.21 For respondents aged over 11 years of age, 74% said that they felt healthy most of the time as 18% said they were 'very healthy' and 57% said they were 'healthy'. Over 6% felt unhealthy or very unhealthy and 20% felt neither healthy nor unhealthy.



(Base number: 2523)

Age

5.22 The following table shows the result by the two age breakdowns:

Do you feel healthy most of the time?						
	5-11		11-16		16+	
	Count	Column N %	Count	Column N %	Count	Column N %
Very healthy	n/a	n/a	427	17.3%	8	13.6%
Healthy	n/a	n/a	1399	56.8%	28	47.5%
Neither healthy nor unhealthy	n/a	n/a	492	20.0%	14	23.7%
Unhealthy	n/a	n/a	127	5.2%	9	15.3%
Very unhealthy	n/a	n/a	19	.8%	0	.0%
Total	n/a	n/a	2464	100.0%	59	100.0%

Area

5.23 The following table shows how healthy respondents aged from 11 years felt in each District / Borough. There were no significant differences.

Do you feel healthy most of the time?										
(11+ only)	Lewes		Eastbourne		Wealden		Rother		Hastings	
	Count	%	Count	%	Count	%	Count	%	Count	%
Very healthy	100	17.6%	21	16.7%	109	19.5%	41	13.6%	34	19.1%
Healthy	304	53.5%	73	57.9%	327	58.4%	174	57.6%	102	57.3%
Neither healthy nor unhealthy	132	23.2%	24	19.0%	87	15.5%	64	21.2%	29	16.3%
Unhealthy	23	4.0%	8	6.3%	33	5.9%	22	7.3%	13	7.3%
Very unhealthy	9	1.6%	0	.0%	4	.7%	1	.3%	0	.0%
Total	568	100.0%	126	100.0%	560	100.0%	302	100.0%	178	100.0%

Gender

5.24 Again it was the male respondents who expressed higher levels of healthiness as 80% indicated that they were either healthy or very healthy compared 68% of female respondents.

iii) **What is the one most important issue that affects your health?
(11+ only)**

Overall

5.25 The table below shows that almost a third of respondents considered smoking was the most important issue that affected their health, home life and exam stress were also frequently mentioned.

	Cases	%
Smoking	645	31.7%
Exam stress	594	29.2%
Home life	482	23.7%
Alcohol	303	14.9%
Drugs	290	14.2%
Other	280	13.8%
Eating disorders	220	10.8%
Sexually Transmitted Infections	104	5.1%

Age

5.26 Age breakdown is as follows:

What is the one most important issue that affects your health?						
	5-11		11-16		16+	
	Count	Column N %	Count	Column N %	Count	Column N %
Smoking	n / a	n / a	623	31.4%	22	40.0%
Sexually Transmitted Infections	n / a	n / a	103	5.2%	1	1.8%
Drugs	n / a	n / a	286	14.4%	4	7.3%
Exam stress	n / a	n / a	570	28.8%	24	43.6%
Home life	n / a	n / a	470	23.7%	12	21.8%
Eating disorders	n / a	n / a	214	10.8%	6	10.9%
Alcohol	n / a	n / a	292	14.7%	11	20.0%
Other	n / a	n / a	274	13.8%	6	10.9%

Area

5.27 The following table shows the results of this question by the five areas of the County:

What's the one most important issue that affects your health?										
	Lewes		Eastbourne		Wealden		Rother		Hastings	
	Count	%	Count	%	Count	%	Count	%	Count	%
Smoking	138	31.5%	28	30.1%	133	28.1%	74	30.5%	47	32.2%
Sexually Transmitted Infections	16	3.7%	4	4.3%	23	4.9%	10	4.1%	6	4.1%
Drugs	53	12.1%	11	11.8%	69	14.6%	35	14.4%	21	14.4%
Exam stress	109	24.9%	34	36.6%	149	31.5%	75	30.9%	40	27.4%
Home life	101	23.1%	26	28.0%	117	24.7%	60	24.7%	32	21.9%
Eating disorders	44	10.0%	15	16.1%	48	10.1%	28	11.5%	20	13.7%
Alcohol	45	10.3%	9	9.7%	97	20.5%	35	14.4%	15	10.3%
Other	78	17.8%	8	8.6%	55	11.6%	31	12.8%	13	8.9%

Gender

5.28 It is interesting to note that female respondents are more likely to attribute exam stress (31%) and home life (26%) as factors that affect their health compared to the male respondents (27% and 20% respectively).

iv) What can be done to make you and your mates healthier

Overall

5.29 Over half of all respondents (52%) thought healthier eating habits can improve their health levels. Getting more exercises is the second most important suggestion for keeping healthy, according to 19% of respondents. Other methods were also mentioned to improve health as shown in the table below. Again a full list of responses can be found in the appendices.

	Cases	%
Healthier eating habits	1635	51.9%
Get more exercise	559	19.0%
Ban / quit smoking	330	10.5%
More sporting / exercise equipment	328	10.4%
Stricter limits on smoking and drinking	122	3.9%

(Base number: 3150)

Age

5.30 The following table shows that a higher percentage of younger respondents mentioned healthier eating compared to those aged 11 and over, whereas the over 11+ focussed more on the issue of smoking and better sporting equipment.

How could we make you and your friends feel healthier? (Top 5 responses)						
	5-11		11-16		16+	
	Count	Column N %	Count	Column N %	Count	Column N %
Healthier eating habits	780	70.6%	841	42.0%	14	34.1%
Get more exercise	181	16.4%	416	20.8%	2	4.9%
Ban / quit smoking	5	.5%	313	15.6%	12	29.3%
More sporting / exercise equipment	91	8.2%	230	11.5%	7	17.1%
Less homework / exams / pressure	1	.1%	106	5.3%	2	4.9%

Area

- 5.31 The following table shows suggestions for making respondents healthier by District / Borough. A significantly greater percentage of respondents in Eastbourne felt that healthier eating would make them feel healthier compared to other areas. A higher percentage of those in Hastings suggested more exercise.

How could we make you and your friends feel healthier? (Top 5 responses)										
	Lewes		Eastbourne		Wealden		Rother		Hastings	
	Count	%	Count	%	Count	%	Count	%	Count	%
Healthier eating habits	236	43.9%	257	66.9%	212	40.8%	257	55.9%	128	51.4%
Get more exercise	93	17.3%	79	20.6%	84	16.2%	99	21.5%	70	28.1%
Ban / quit smoking	82	15.2%	10	2.6%	66	12.7%	42	9.1%	18	7.2%
More sporting / exercise equipment	75	13.9%	33	8.6%	58	11.2%	56	12.2%	30	12.0%
Less homework / exams / pressure	16	3.0%	7	1.8%	33	6.3%	13	2.8%	6	2.4%

Gender

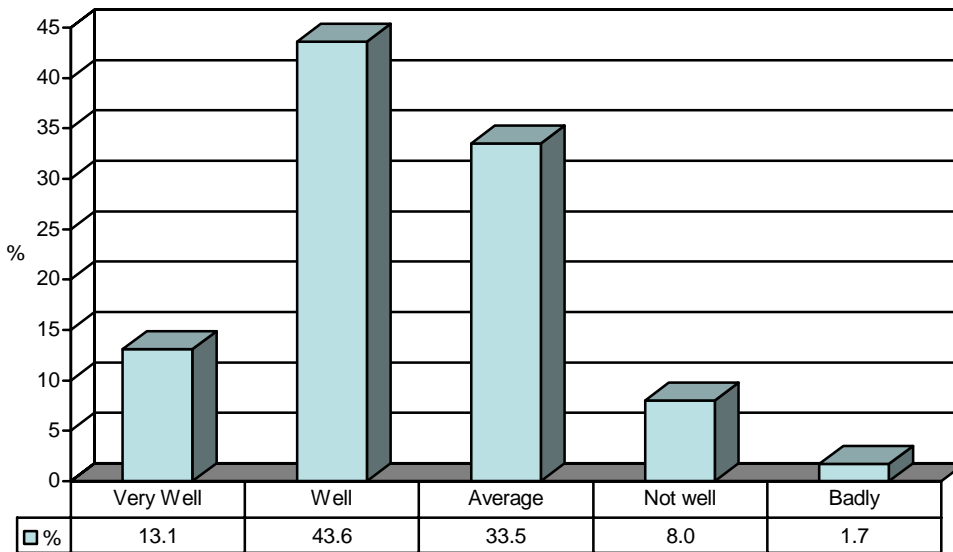
- 5.32 Six per cent more females mentioned healthier eating habits compared to male respondents.

Enjoyment and Achievement

i) Are You Doing Well at School (11+ Only)

Overall

5.33 Over 13% of respondents aged over 11 years indicated that they were doing as well as they think they can at school, college or work and 44% felt they were doing well. Almost 10% stated that they were not satisfied with their performance at school, college or work. More than a third of respondents (34%) rated their performance as average.



(Base number: 2572)

Age

5.34 The results divided by the two age brackets were very similar and were as follows:

Are you doing as well as you think?						
	5-11		11-16		16+	
	Count	Column N %	Count	Column N %	Count	Column N %
Very well	n/a	n/a	330	13.1%	8	13.1%
Well	n/a	n/a	1096	43.6%	25	41.0%
Average	n/a	n/a	841	33.5%	21	34.4%
Not well	n/a	n/a	199	7.9%	7	11.5%
Badly	n/a	n/a	45	1.8%	0	.0%
Total	n/a	n/a	2511	100.0%	61	100.0%

Area

- 5.35 The table below shows how well respondents aged 11 years and over feel they are doing at school / college in each District / Borough. A greater percentage of respondents in Hastings felt that they were doing well or very well.

How well do you usually feel?										
(11+ only)	Lewes		Eastbourne		Wealden		Rother		Hastings	
	Count	%	Count	%	Count	%	Count	%	Count	%
Very well	41	36.0%	157	42.9%	34	38.6%	114	38.9%	47	36.2%
Well	55	48.2%	161	44.0%	39	44.3%	128	43.7%	67	51.5%
Not sure	10	8.8%	34	9.3%	12	13.6%	33	11.3%	14	10.8%
Unwell	8	7.0%	12	3.3%	3	3.4%	15	5.1%	2	1.5%
Very unwell	0	.0%	2	.5%	0	.0%	3	1.0%	0	.0%
Total	114	100.0%	366	100.0%	88	100.0%	293	100.0%	130	100.0%

Gender

- 5.36 A slightly higher percentage of male respondents (11%) said that they usually 'not well' or 'badly' compared to the female respondents (9%).

ii) What Would Help You Do Better

Overall

5.37 The table below listed the top five aspects that all respondents thought might help them to do better.

	Cases	%
Remove / control distractions	643	20.4%
To concentrate / listen more	437	13.9%
More help / support / advice	373	11.8%
Make lessons more interesting and fun	360	11.4%
Better / more helpful teachers	347	11.0%

(Base number: 3148)

Age

5.38 The table below shows that a higher percentage of those aged 11-16 felt that the removal and control of distractions was the most important issue, whereas the younger age groups mentioned their lack of concentration more frequently.

What would help you?						
	5-11		11-16		16+	
	Count	Column N %	Count	Column N %	Count	Column N %
Remove / control distractions	50	4.4%	593	30.1%	0	.0%
To concentrate / listen more	227	20.1%	206	10.4%	4	9.3%
Better / more helpful teachers	66	5.8%	263	13.3%	18	41.9%
Make lessons more interesting and fun	137	12.1%	221	11.2%	2	4.7%
More help / support / advice	207	18.3%	158	8.0%	8	18.6%
Not sitting next to friends / ignore others	21	1.9%	161	8.2%	0	0.0%
One to one / smaller classes	30	2.7%	128	6.5%	5	11.6%
More / better play and sports equipment	121	10.7%	16	0.8%	1	2.3%
More / better equipment	98	8.7%	8	0.4%	1	2.3%

Area

5.39 The table below shows suggestions for what would make respondents do better at school by District / Borough.

What would help you do better? (Top 5 responses)										
	Lewes		Eastbourne		Wealden		Rother		Hastings	
	Count	%	Count	%	Count	%	Count	%	Count	%
Remove / control distractions	190	35.1%	30	8.0%	140	27.1%	70	15.5%	30	12.9%
To concentrate / listen more	60	11.1%	71	18.9%	48	9.3%	60	13.3%	37	15.9%
Better / more helpful teachers	71	13.1%	25	6.6%	62	12.0%	49	10.8%	19	8.2%
Make lessons more interesting and fun	54	10.0%	39	10.4%	77	14.9%	69	15.3%	25	10.7%
More help / support / advice	59	10.9%	50	13.3%	46	8.9%	67	14.8%	27	11.6%

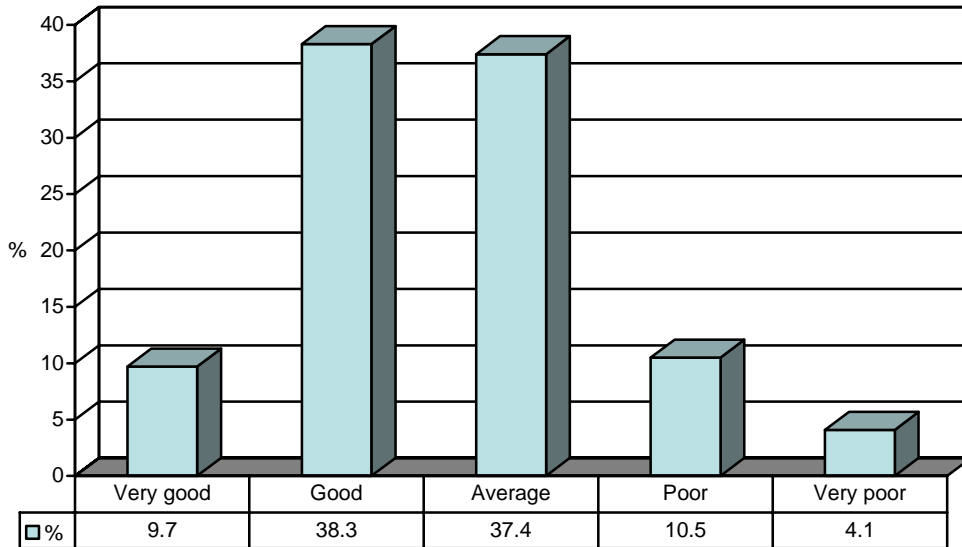
Gender

5.40 When comparing gender responses 3% more females mentioned extra support, help or guidance compared to the male respondents.

iii) What do you reckon about the careers, job, training advice and info you get? (11+ only)

Overall

5.41 Almost half of respondents (49%) said that the careers, job, training advice and info they received was either very good (10%) or good (38%). However, 37% rated the advice as average and 15% said it was poor or very poor.



Age

5.42 Those aged 16 years and over were less positive about this type of advice and information compared to the 11- 16 year olds.

What do you reckon about the careers, job, training advice and info you get?						
	5-11		11-16		16+	
	Count	Column N %	Count	Column N %	Count	Column N %
Very good	n/a	n/a	216	9.5%	10	17.2%
Good	n/a	n/a	880	38.6%	15	25.9%
Average	n/a	n/a	860	37.7%	15	25.9%
Poor	n/a	n/a	236	10.4%	10	17.2%
Very Poor	n/a	n/a	87	3.8%	8	13.8%
Total	n/a	n/a	2279	100.0%	58	100.0%

Area

5.43 The following table shows the breakdown by the five Districts / Boroughs.

What do you reckon about the careers, job, training advice and info you get?										
	Lewes		Eastbourne		Wealden		Rother		Hastings	
	Count	%	Count	%	Count	%	Count	%	Count	%
Very good	53	10.2%	14	11.8%	49	9.4%	29	9.9%	17	10.6%
Good	201	38.6%	54	45.4%	194	37.3%	107	36.6%	80	49.7%
Average	200	38.4%	36	30.3%	190	36.5%	114	39.0%	48	29.8%
Poor	50	9.6%	11	9.2%	63	12.1%	28	9.6%	8	5.0%
Very poor	17	3.3%	4	3.4%	24	4.6%	14	4.8%	8	5.0%
Total	521	100.0%	119	100.0%	520	100.0%	292	100.0%	161	100.0%

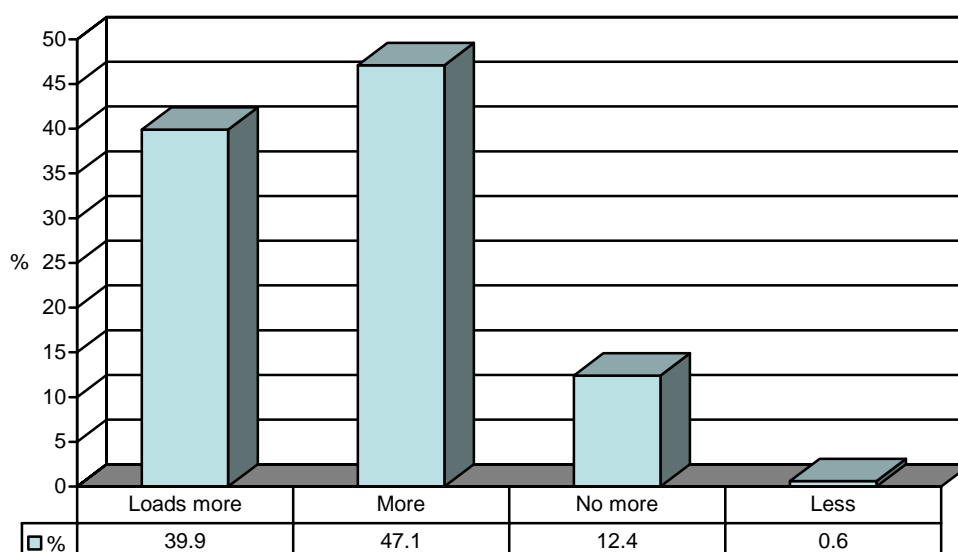
Age

5.44 There were no significant gender differences

iv) Would you like more activities to do (11+ only)

Overall

5.45 The majority (87%) of respondents aged over 11 years would like more activities and stuff to do with 40% saying they would like loads more to do. Just 1% felt that current activities and stuff are too much and need to be reduced. Over 12% of respondents thought the activities were just about the right level and therefore no more are required.



(Base number: 2544)

Age

5.46 The table below shows the results cross analysed by the two different age brackets:

Would you like more activities to do in your area? (Top 5 responses)						
	5-11		11-16		16+	
	Count	Column N %	Count	Column N %	Count	Column N %
Loads more	n/a	n/a	995	40.1%	20	33.3%
More	n/a	n/a	1168	47.0%	31	51.7%
No more	n/a	n/a	306	12.3%	9	15.0%
Less	n/a	n/a	15	.6%	0	.0%
Total	n/a	n/a	2484	100.0%	60	100.0%

Area

- 5.47 There are no significant area differences in terms of demand for more activities in each area. The table below shows the breakdown by District / Borough.

Would you like more activities to do in your area?										
(11+ only)	Lewes		Eastbourne		Wealden		Rother		Hastings	
	Count	%	Count	%	Count	%	Count	%	Count	%
Loads more	241	42.7%	41	32.3%	256	45.0%	122	39.4%	65	36.3%
More	266	47.2%	70	55.1%	249	43.8%	154	49.7%	83	46.4%
No more	53	9.4%	16	12.6%	60	10.5%	32	10.3%	31	17.3%
Less	4	.7%	0	.0%	4	.7%	2	.6%	0	.0%
Total	564	100.0%	127	100.0%	569	100.0%	310	100.0%	179	100.0%

Gender

- 5.48 There were no significant gender differences.

v) What activities would they be

Overall

5.49 Almost one third of respondents (31%) who would like more activities and stuff to do said they want more sports activities. The table belows listed five types of activities which were mentioned the most frequently by respondents.

	Cases	%
More sports activities	966	31.4%
Youth clubs / centre	589	19.2%
Football	389	12.7%
Swimming	384	12.5%
Sports fields / parks / open spaces	343	11.2%
Cinemas / theatres	223	7.3%
Performing arts	224	7.3%

(Base number: 3075)

Age

5.50 The 5 – 11 year old age groups were much more likely to suggest the three sports related activities. Cinemas and Bowling alleys were mentioned more frequently by the oldest age group.

What would they be?						
	5-11		11-16		16+	
	Count	Column N %	Count	Column N %	Count	Column N %
Football	192	17.8%	195	10.0%	2	5.3%
Swimming	160	14.8%	219	11.2%	5	13.2%
More sports activities	372	34.5%	580	29.6%	14	36.8%
Youth clubs / centres	158	14.6%	426	21.8%	5	13.2%
Sports fields / parks / open spaces	79	7.3%	263	13.4%	1	2.6%

Area

5.51 There are no significant area differences:

What would they be? (Top 5 responses)										
	Lewes		Eastbourne		Wealden		Rother		Hastings	
	Count	%	Count	%	Count	%	Count	%	Count	%
Football	53	9.9%	62	16.0%	45	9.1%	65	14.0%	34	14.7%
Swimming	84	15.6%	47	12.1%	50	10.1%	62	13.4%	24	10.4%
More sports activities	162	30.2%	122	31.5%	139	28.0%	181	39.1%	74	32.0%
Youth clubs / centres	118	22.0%	92	23.8%	106	21.3%	86	18.6%	39	16.9%
Sports fields / parks / open spaces	70	13.0%	33	8.5%	45	9.1%	51	11.0%	39	16.9%

Gender

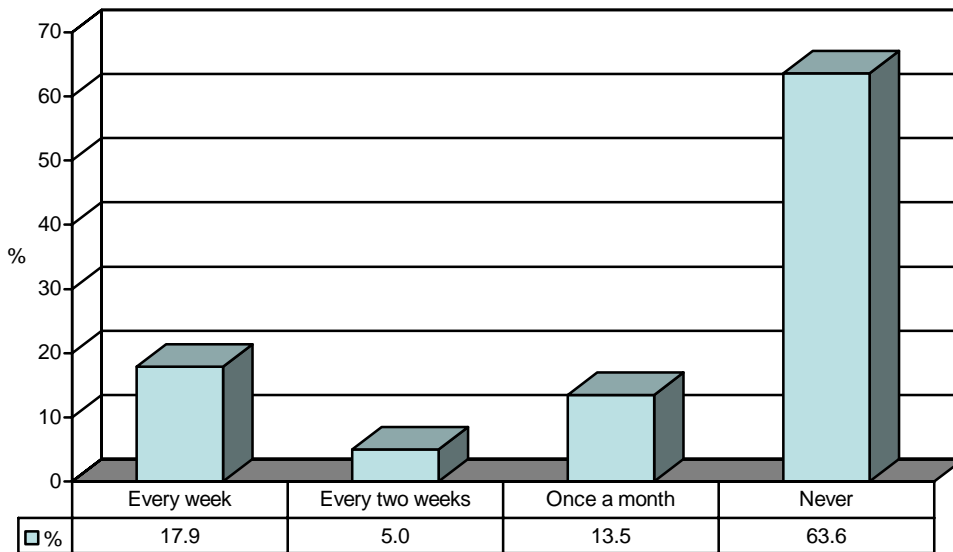
5.52 Gender analysis shows that more football and a skate park are more frequently suggested by the male respondents and performing arts and shopping are mentioned more often by female respondents. However, more surprising is that a significantly higher percentage of males mentioned sports facilities (38% compared to 27%) yet more females mentioned swimming (16% compared to 9%) and youth clubs (25% compared to 13%).

Making a Positive Contribution

i) How often you help out with your community (11+ Only)

Overall

5.53 Almost 64% of respondents aged 11 years or over never help out in their communities. Of those who said they do help, 49% (18% overall) help out in their communities every week and 14% (5% overall) help about every two weeks.



(Base number: 2489)

Age

5.54 Breakdown by age groups was as follows:

Do you help out in your community, things like football? (Top 5 responses)						
	5-11		11-16		16+	
	Count	Column N %	Count	Column N %	Count	Column N %
Every week	n / a	n / a	436	18.0%	10	16.4%
Every two weeks	n / a	n / a	121	5.0%	3	4.9%
Once a month	n / a	n / a	324	13.3%	11	18.0%
Never	n / a	n / a	1547	63.7%	37	60.7%
Total	n / a	n / a	2428	100.0%	61	100.0%

Area

5.55 Respondents aged 11 years and over in Lewes helped out in the community more frequently, whilst a greater percentage of respondents in Wealden had never helped out.

Do you help out in your community, things like football?										
(11+ only)	Lewes		Eastbourne		Wealden		Rother		Hastings	
	Count	%	Count	%	Count	%	Count	%	Count	%
Every week	132	23.8%	18	14.3%	70	12.5%	54	18.1%	30	17.0%
Every two weeks	22	4.0%	7	5.6%	29	5.2%	10	3.3%	13	7.4%
Once a month	79	14.2%	18	14.3%	58	10.4%	60	20.1%	30	17.0%
Never	322	58.0%	83	65.9%	403	72.0%	175	58.5%	103	58.5%
Total	555	100.0%	126	100.0%	560	100.0%	299	100.0%	176	100.0%

Gender

5.56 There were no significant gender differences.

ii) Do You Help Anyone Who Has Special Needs (11+ Only)

Overall

5.57 Over 58% of respondents aged over 11 years of age do not help anyone who has specific or special needs and 1% have disabilities themselves. The remaining 41% did help their relatives, friends or other disabled people or are willing to help those with special needs. The details are shown in following table:

	Cases	%
No	1251	58.1%
Yes (unspecified)	385	17.9%
For a relative	272	12.6%
Help disabled / handicapped	101	4.7%
For a Friend	90	4.2%
Willing to help if needed	41	1.9%
Sometimes	45	2.1%
I have a disability myself	19	0.9%
Total	2153	100%

Age

5.58 There are no significant differences between these two age groups.

Do you help a mate or anyone in your family who has special need? (Top 5 responses)						
	5-11		11-16		16+	
	Count	Column N %	Count	Column N %	Count	Column N %
No	n / a	n / a	1229	58.1%	22	56.4%
Yes (unspecified)	n / a	n / a	377	17.8%	8	20.5%
For a relative	n / a	n / a	266	12.6%	6	15.4%
For a friend	n / a	n / a	87	4.1%	3	7.7%
Help disabled / handicapped	n / a	n / a	101	4.8%	0	.0%

Area

5.59 There are no significant differences by area:

Do you help a mate or anyone in your family who has special need? (Top 5 responses)										
(11+ only)	Lewes		Eastbourne		Wealden		Rother		Hastings	
	Count	%	Count	%	Count	%	Count	%	Count	%
No	292	58.2%	58	56.3%	309	61.4%	156	57.4%	79	50.3%
Yes	89	17.7%	18	17.5%	97	19.3%	29	10.7%	34	21.7%
For a relative	56	11.2%	11	10.7%	54	10.7%	48	17.6%	24	15.3%
For a friend	27	5.4%	8	7.8%	14	2.8%	10	3.7%	9	5.7%
Help disabled / handicapped	25	5.0%	4	3.9%	16	3.2%	19	7.0%	8	5.1%

Gender

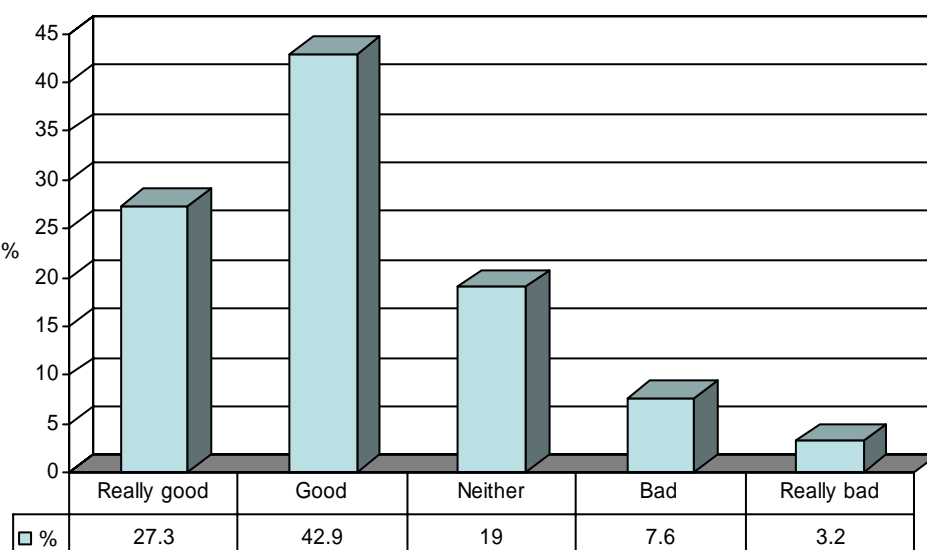
5.60 Female respondents (46%) were more likely to help a mate or relative compared to the male respondents (37%).

Quality of Life

i) How would you rate where you live

Overall

5.61 Over 70% of all respondents rated the place where they live as 'good' (43%) or 'really good' (27%) and 11% rated where they live as 'bad' (8%) or really bad (3%). Almost a fifth of respondents (19%) rated their area as neither good nor bad.



(Base number: 4155)

Age

5.62 It is interesting to note that the younger age groups rated their area as good or really good compared to the older age groups.

Are you doing as well as you think?						
	5-11		11-16		16+	
	Count	Column N %	Count	Column N %	Count	Column N %
Really good	650	40.4%	476	19.1%	10	16.4%
Good	607	37.8%	1144	46.0%	30	49.2%
Neither	193	12.0%	587	23.6%	11	18.0%
Bad	105	6.5%	201	8.1%	8	13.1%
Really bad	52	3.2%	79	3.2%	2	3.3%

Area

- 5.63 A significantly higher percentage of respondents in Eastbourne felt that the area where they lived was good or really good compared to other Districts/ Boroughs.

How would you rate where you live?										
(11+ only)	Lewes		Eastbourne		Wealden		Rother		Hastings	
	Count	%	Count	%	Count	%	Count	%	Count	%
Really good	153	22.4%	159	32.1%	132	19.9%	189	31.7%	60	19.5%
Good	299	43.8%	223	45.1%	275	41.5%	256	42.9%	150	48.9%
Neither good nor bad	141	20.6%	66	13.3%	177	26.7%	90	15.1%	59	19.2%
Bad	70	10.2%	34	6.9%	49	7.4%	43	7.2%	29	9.4%
Really bad	20	2.9%	13	2.6%	30	4.5%	19	3.2%	9	2.9%
Total	683	100.0%	495	100.0%	663	100.0%	597	100.0%	307	100.0%

Gender

- 5.64 There were no significant gender differences.

ii) What would you do to make town / area better than you

Overall

5.65 The table below shows the top five aspects that respondents thought might make their town or area better. Again more things to do or places to go was a common suggestion, cleaner streets was also mentioned frequently.

	Cases	%
More things to do / places to go for young people	884	28.3%
Cleaner streets	394	12.6%
Controlling anti-social behaviour	354	11.3%
More / better shops	306	9.8%
Better environment / atmosphere	279	8.9%

(Base number: 3128)

Age

5.66 The following table shows that cleaner streets and less speeding traffic was a priority for the 5 – 11 year olds, whereas more things to do or places to go was a priority for the older age groups.

What would you do to make your town / area better for you? (Top 5 responses)						
	5-11		11-16		16+	
	Count	Column N %	Count	Column N %	Count	Column N %
More things to do / places to go for young people	106	9.3%	761	38.9%	17	44.7%
Cleaner streets	212	18.7%	180	9.2%	2	5.3%
More / better shops	98	8.6%	205	10.5%	3	7.9%
More / better parks and open spaces	196	17.3%	53	2.7%	0	0.0%
More sports / leisure activities and facilities	74	6.5%	143	7.3%	1	2.6%
Controlling speeding / congested traffic	139	12.2%	45	2.3%	2	5.3%
Controlling anti social behaviour	84	7.4%	269	13.8%	1	2.6%
Better / more policing and security	65	5.7%	158	8.1%	7	18.4%
Better environment / atmosphere	129	11.4%	142	7.3%	8	21.1%

Area

5.67 More respondents in the Lewes area suggested that there should be more things to do or places to go for young people:

What would you do to make your town / area better for you? (Top 5 responses)										
	Lewes		Eastbourne		Wealden		Rother		Hastings	
	Count	%	Count	%	Count	%	Count	%	Count	%
More things to do / places to go for young people	212	38.2%	74	18.6%	167	31.7%	147	32.6%	51	21.3%
Cleaner streets	81	14.6%	89	22.4%	35	6.7%	34	7.5%	38	15.8%
More / better shops	71	12.8%	27	6.8%	52	9.9%	50	11.1%	15	6.3%
More / better parks and open spaces	22	4.0%	54	13.6%	15	2.9%	40	8.9%	26	10.8%
More sports / leisure activities and facilities	37	6.7%	21	5.3%	46	8.7%	29	6.4%	22	9.2%

Gender

5.68 There were no significant gender differences.

Feedback

Overall

5.69 Almost one third of respondents (33%) would like to receive information about what changes are made by letters through the post and 24% preferred newsletters, leaflets or magazine. Many other ways of contact were also mentioned and listed below:

Preferences	Cases	%
Letter / post home	859	32.7%
Newsletters / leaflets / magazine	617	23.5%
Media	385	14.7%
Feedback through school / college	281	10.7%
Email	266	10.1%
Posters / billboards	166	6.3%
Mobile phone / text	154	5.9%
Internet / website	104	4.0%
Face to face / meetings	96	3.7%
Attending school assemblies	111	4.2%
By making changes / show us	62	2.4%
Other	80	3.0%
Unsure / no preference	30	1.1%
Total	2624	100.0%

Age

5.70 All age groups would prefer to receive information about changes through a letter:

What is the best way for us to tell you what changes are made? (Top 5 responses)						
	5-11		11-16		16+	
	Count	Column N %	Count	Column N %	Count	Column N %
Letter / post home	379	36.4%	472	30.6%	8	18.2%
Newsletters / leaflets / magazine	166	16.0%	439	28.5%	12	27.3%
Media	205	19.7%	175	11.4%	5	11.4%
Feedback through school / college	124	11.9%	149	9.7%	8	18.2%
Email	54	5.2%	204	13.2%	8	18.2%

Area

5.71 More respondents from the Eastbourne area would prefer to receive the information by letter compared to the other areas:

What is the best way for us to tell you what changes are made? (Top 5 responses)										
	Lewes		Eastbourne		Wealden		Rother		Hastings	
	Count	%	Count	%	Count	%	Count	%	Count	%
Letter / post home	146	30.6%	179	48.1%	153	34.3%	127	30.4%	74	35.7%
Newsletters / leaflets / magazine	143	30.0%	32	8.6%	116	26.0%	123	29.4%	59	28.5%
Media	81	17.0%	57	15.3%	34	7.6%	59	14.1%	22	10.6%
Feedback through school / college	29	6.1%	44	11.8%	51	11.4%	43	10.3%	22	10.6%
Email	70	14.7%	23	6.2%	45	10.1%	47	11.2%	29	14.0%

Gender

5.72 There were no significant gender differences.

Demographics

Gender

Gender	Cases	%
Male	1917	48.7%
Female	2020	51.3%
Total	3937	100.0%

321 respondents did not state gender

Age

Age	Count	%
5	33	1.0%
6	54	1.6%
7	223	6.5%
8	312	9.1%
9	315	9.2%
10	364	10.6%
11	354	10.3%
12	369	10.8%
13	376	11.0%
14	485	14.2%
15	361	10.5%
16	126	3.7%
17	34	1.0%
18	13	0.4%
19	5	0.2%
21	2	0.1%
25	1	0.03%
Total	3427	100.0%

831 respondents did not state age

Ethnicity

Ethnicity	Count	Column N %
White	3433	92.9%
Mixed	128	3.5%
Asian or Asian British	60	1.6%
Black or Black British	32	.9%
Chinese	22	.6%
Other	22	.6%
Total	3697	100.0%

561 respondents did not state ethnicity

District / Borough

		Count	Column N %
District	Lewes	689	16.2%
	Eastbourne	506	11.9%
	Wealden	666	15.6%
	Rother	608	14.3%
	Hastings	315	7.4%
	Unknown	1474	34.6%
	Total	4258	100.0%

LPC Area

		Count	Column N %
LPC	Peacehaven East	1	.0%
	Chailey	104	2.4%
	Eastbourne South	292	6.9%
	Eastbourne North	73	1.7%
	Hailsham	372	8.7%
	Eastbourne North East	196	4.6%
	Seaford	309	7.3%
	Peacehaven	43	1.0%
	Ringmer	15	.4%
	Heathfield	160	3.8%
	Lewes	25	.6%
	Newhaven	252	5.9%
	Rye	102	2.4%
	Robertsbridge	19	.4%
	Battle	89	2.1%
	Uckfield	17	.4%
	Crowborough	1	.0%
	Uplands	25	.6%
	Hastings West	55	1.3%
	Hastings East	70	1.6%
	South St Leonards	93	2.2%
	North St Leonards	97	2.3%
	Bexhill	374	8.8%
Unknown	1474	34.6%	
Total	4258	100.0%	

School/Organisation

Name of school	Count	Column N %
New Horizon	46	1.1%
Battle Youth Centre	51	1.2%
Seaford Head	463	10.9%
Chailey school	116	2.7%
Bexhill High	66	1.6%
Tideway	291	6.8%
Heathfield Community College	180	4.2%
Chyngton	90	2.1%
St Richards Catholic College	586	13.8%
Catsfield Primary School	13	0.3%
Unknown	1155	27.1%
Polegate School	2	0.04%
Elpwistone Community School	75	1.8%
The Freda Gardham School	14	0.3%
Grove Park Special School	5	0.1%
Chantry Community Primary School	171	4.0%
Shinewater Primary School	11	0.3%
Ninfield CE Primary School	54	1.3%
Willingdon Primary School	29	0.7%
St Michaels (Withyham)	7	0.2%
Marshlands Primary School	3	0.1%
Stone Cross School	26	0.6%
Nethersfield CE Primary School	82	1.9%
Guestling - Bradshaw CofE Primary	87	2.0%
Ickleham CofE Primary	71	1.7%
St Mary Star of the Sea Catholic School	123	2.9%
Tollgate Junior School	139	3.3%
Stafford Junior School	239	5.6%
The Lindfield School	63	1.5%
Total	4258	100.0%

By Gender*Gender by Age*

		Gender					
		Not stated		Male		Female	
		Count	Column N %	Count	Column N %	Count	Column N %
Age	5-11	25	7.8%	805	42.0%	827	40.9%
	11-16	295	91.9%	1086	56.7%	1159	57.4%
	16+	1	.3%	26	1.4%	34	1.7%
	Total	321	100.0%	1917	100.0%	2020	100.0%

Gender by Ethnicity

		Gender					
		Not stated		Male		Female	
		Count	Column N %	Count	Column N %	Count	Column N %
Ethnicity	White	21	95.5%	1632	91.4%	1780	94.2%
	Mixed	1	4.5%	69	3.9%	58	3.1%
	Asian or Asian British	0	.0%	36	2.0%	24	1.3%
	Black or Black British	0	.0%	15	.8%	17	.9%
	Chinese	0	.0%	18	1.0%	4	.2%
	Other	0	.0%	16	.9%	6	.3%
	Total	22	100.0%	1786	100.0%	1889	100.0%

Gender by District / Borough

		gender					
		Not stated		Male		Female	
		Count	Column N %	Count	Column N %	Count	Column N %
District	Lewes	9	2.8%	324	16.9%	356	17.6%
	Eastbourne	4	1.2%	241	12.6%	261	12.9%
	Wealden	12	3.7%	312	16.3%	342	16.9%
	Rother	6	1.9%	246	12.8%	356	17.6%
	Hastings	6	1.9%	141	7.4%	168	8.3%
	Unknown	284	88.5%	653	34.1%	537	26.6%
	Total	321	100.0%	1917	100.0%	2020	100.0%

Gender by LPC Area

		gender					
		Not stated		Male		Female	
		Count	Column N %	Count	Column N %	Count	Column N %
LPC	Peacehaven	0	.0%	1	.1%	0	.0%
	Chailey	2	.6%	44	2.3%	58	2.9%
	Eastbourne South	4	1.2%	141	7.4%	147	7.3%
	Eastbourne North	1	.3%	36	1.9%	36	1.8%
	Hailsham	5	1.6%	177	9.2%	190	9.4%
	Eastbourne North East	1	.3%	88	4.6%	107	5.3%
	Seaford	4	1.2%	140	7.3%	165	8.2%
	Peacehaven	1	.3%	16	.8%	26	1.3%
	Ringmer	0	.0%	5	.3%	10	.5%
	Heathfield	4	1.2%	76	4.0%	80	4.0%
	Lewes	0	.0%	18	.9%	7	.3%
	Newhaven	3	.9%	124	6.5%	125	6.2%
	Rye	1	.3%	49	2.6%	52	2.6%
	Robertsbridge	0	.0%	7	.4%	12	.6%
	Battle	1	.3%	38	2.0%	50	2.5%
	Uckfield	0	.0%	9	.5%	8	.4%
	Crowborough	0	.0%	0	.0%	1	.0%
	Uplands	1	.3%	9	.5%	15	.7%
	Hastings West	2	.6%	25	1.3%	28	1.4%
	Hastings West	3	.9%	21	1.1%	46	2.3%
	South St Leonards	0	.0%	44	2.3%	49	2.4%
	North St Leonards	1	.3%	51	2.7%	45	2.2%
	Bexhill	3	.9%	145	7.6%	226	11.2%
	Unknown	284	88.5%	653	34.1%	537	26.6%
	Total	321	100.0%	1917	100.0%	2020	100.0%

By age group

Age by ethnicity

Ethnicity	Age					
	5-11		11-16		16+	
	Count	Column N %	Count	Column N %	Count	Column N %
White	1303	91.8%	2074	93.4%	56	96.6%
Mixed	68	4.8%	60	2.7%	0	.0%
Asian or Asian British	14	1.0%	45	2.0%	1	1.7%
Black or Black British	19	1.3%	13	.6%	0	.0%
Chinese	5	.4%	17	.8%	0	.0%
Other	10	.7%	11	.5%	1	1.7%
Total	1419	100.0%	2220	100.0%	58	100.0%

Age by District / Borough

		age					
		5-11		11-16		16+	
		Count	Column N %	Count	Column N %	Count	Column N %
District	Lewes	115	6.9%	573	22.6%	1	1.6%
	Eastbourne	375	22.6%	127	5.0%	4	6.6%
	Wealden	90	5.4%	562	22.1%	14	23.0%
	Rother	297	17.9%	290	11.4%	21	34.4%
	Hastings	132	8.0%	178	7.0%	5	8.2%
	Unknown	648	39.1%	810	31.9%	16	26.2%
	Total	1657	100.0%	2540	100.0%	61	100.0%

Age by LPC Area

		age					
		5-11		11-16		16+	
		Count	Column N %	Count	Column N %	Count	Column N %
LPC	Peacehaven	0	.0%	1	.0%	0	.0%
	Chailey	35	2.1%	66	2.6%	3	4.9%
	Eastbourne South	221	13.3%	70	2.8%	1	1.6%
	Eastbourne North	23	1.4%	49	1.9%	1	1.6%
	Hailsham	5	.3%	366	14.4%	1	1.6%
	Eastbourne North East	155	9.4%	38	1.5%	3	4.9%
	Seaford	99	6.0%	209	8.2%	1	1.6%
	Peacehaven	3	.2%	40	1.6%	0	.0%
	Ringmer	1	.1%	14	.6%	0	.0%
	Heathfield	21	1.3%	137	5.4%	2	3.3%
	Lewes	0	.0%	25	1.0%	0	.0%
	Newhaven	10	.6%	242	9.5%	0	.0%
	Rye	60	3.6%	37	1.5%	5	8.2%
	Robertsbridge	1	.1%	15	.6%	3	4.9%
	Battle	67	4.0%	21	.8%	1	1.6%
	Uckfield	2	.1%	15	.6%	0	.0%
	Crowborough	0	.0%	1	.0%	0	.0%
	Uplands	5	.3%	6	.2%	14	23.0%
	Hastings West	17	1.0%	37	1.5%	1	1.6%
	Hastings West	23	1.4%	46	1.8%	1	1.6%
	South St Leonards	58	3.5%	34	1.3%	1	1.6%
	North St Leonards	34	2.1%	61	2.4%	2	3.3%
	Bexhill	169	10.2%	200	7.9%	5	8.2%
	Unknown	648	39.1%	810	31.9%	16	26.2%
	Total	1657	100.0%	2540	100.0%	61	100.0%

By Ethnicity

Ethnicity by District / Borough

District	Ethnicity											
	White		Mixed		Asian or Asian British		Black or Black British		Chinese		Other	
	Count	%	Count	%	Count	%	Count	%	Count	%	Count	%
Lewes	604	17.6%	16	12.5%	11	18.3%	3	9.4%	5	22.7%	6	27.3%
Eastbourne	437	12.7%	24	18.8%	12	20.0%	6	18.8%	2	9.1%	5	22.7%
Wealden	621	18.1%	12	9.4%	9	15.0%	5	15.6%	1	4.5%	1	4.5%
Rother	561	16.3%	25	19.5%	6	10.0%	5	15.6%	2	9.1%	1	4.5%
Hastings	265	7.7%	10	7.8%	5	8.3%	4	12.5%	1	4.5%	4	18.2%
Unknown	945	27.5%	41	32.0%	17	28.3%	9	28.1%	11	50.0%	5	22.7%
Total	3433	100.0%	128	100.0%	60	100.0%	32	100.0%	22	100.0%	22	100.0%

Ethnicity by LPC Area

LPC	Ethnicity											
	White		Mixed		Asian or Asian British		Black or Black British		Chinese		Other	
	Count	%	Count	%	Count	%	Count	%	Count	%	Count	%
Peacehaven	1	.0%	0	.0%	0	.0%	0	.0%	0	.0%	0	.0%
Chailey	95	2.8%	3	2.3%	2	3.3%	1	3.1%	0	.0%	1	4.5%
Eastbourne South	256	7.5%	15	11.7%	6	10.0%	4	12.5%	0	.0%	2	9.1%
Eastbourne North	62	1.8%	2	1.6%	3	5.0%	1	3.1%	0	.0%	1	4.5%
Hailsham	352	10.3%	5	3.9%	7	11.7%	2	6.3%	1	4.5%	0	.0%
Eastbourne North East	169	4.9%	9	7.0%	3	5.0%	1	3.1%	2	9.1%	2	9.1%
Seaford	256	7.5%	9	7.0%	6	10.0%	2	6.3%	2	9.1%	4	18.2%
Peacehaven	36	1.0%	4	3.1%	0	.0%	0	.0%	2	9.1%	0	.0%
Ringmer	13	.4%	1	.8%	0	.0%	0	.0%	1	4.5%	0	.0%
Heathfield	146	4.3%	3	2.3%	2	3.3%	3	9.4%	0	.0%	0	.0%
Lewes	25	.7%	0	.0%	0	.0%	0	.0%	0	.0%	0	.0%
Newhaven	234	6.8%	1	.8%	3	5.0%	0	.0%	0	.0%	2	9.1%
Rye	96	2.8%	4	3.1%	1	1.7%	1	3.1%	0	.0%	0	.0%
Robertsbridge	17	.5%	1	.8%	1	1.7%	0	.0%	0	.0%	0	.0%
Battle	84	2.4%	2	1.6%	1	1.7%	1	3.1%	0	.0%	1	4.5%
Uckfield	17	.5%	0	.0%	0	.0%	0	.0%	0	.0%	0	.0%
Crowborough	1	.0%	0	.0%	0	.0%	0	.0%	0	.0%	0	.0%
Uplands	19	.6%	2	1.6%	0	.0%	0	.0%	0	.0%	0	.0%
Hastings West	45	1.3%	2	1.6%	2	3.3%	0	.0%	1	4.5%	2	9.1%
Hastings West	66	1.9%	1	.8%	0	.0%	0	.0%	0	.0%	1	4.5%
South St Leonards	64	1.9%	2	1.6%	3	5.0%	4	12.5%	0	.0%	1	4.5%
North St Leonards	90	2.6%	5	3.9%	0	.0%	0	.0%	0	.0%	0	.0%
Bexhill	344	10.0%	16	12.5%	3	5.0%	3	9.4%	2	9.1%	0	.0%
Unknown	945	27.5%	41	32.0%	17	28.3%	9	28.1%	11	50.0%	5	22.7%
Total	3433	100.0%	128	100.0%	60	100.0%	32	100.0%	22	100.0%	22	100.0%

Appendices

- 1 Copy of the questionnaire
- 2 Full set of overall results
- 3 Example of respondent comments
- 4 Special Needs Schools Comments

4 Special school results

		Count	Column N %
How safe do you feel where you live?	Very safe	57	50.0
	Safe	37	32.5
	Neither safe nor unsafe	7	6.1
	Not safe	8	7.0
	Very unsafe	5	4.4
	Total	114	100.0

What types of things make you feel unsafe		Count	Column N %
	Crime in general	1	2.6%
	Some neighbours	1	2.6%
	Nothing – I feel safe	11	28.2%
	Volume / speed of traffic	4	10.3%
	Large groups / gangs of people	8	20.5%
	Suspicious / bad people	2	5.1%
	Bullying	3	7.7%
	Drug users / dealers	2	5.1%
	Anti social behaviour	3	7.7%
	Fear of being attacked or raped	1	2.6%
	Older children	1	2.6%
	Walking home alone / at night	1	2.6%
	Other	2	5.1%
	Total	39	102.7%

Multiple

		Count	Column N %
How safe do you feel where you go to school	Very safe	40	39.2%
	Safe	45	44.1%
	Neither safe nor unsafe	6	5.9%
	Not safe	10	9.8%
	Very unsafe	1	1.0%
	Total	102	100.0%

		Count	Column N %
What do you think you might sort it out?	More visible policing	6	33.3%
	Nothing	4	22.2%
	More / better street lighting	1	5.6%
	Security	1	5.6%
	Stricter teaching	1	5.6%
	Traffic control	2	11.1%
	Dispersing gangs	1	5.6%
	Stronger penalties / harsher punishment	2	11.1%
	Dealing with suspicious looking people	2	11.1%
	Curfews	1	5.6%
	Other	1	5.6%
	Total	18	100.0%

Multiple

		Count	Column N %
Do you feel healthy most of the time	Very healthy	47	46.5%
	Healthy	33	32.7%
	Neither healthy nor unhealthy	18	17.8%
	Unhealthy	3	2.9%
	Very unhealthy	0	0.0%
	Total	101	100.0%

		Count	Column N %
How well do you usually feel?	Very well	11	61.1%
	Well	3	16.7%
	Average	4	22.2%
	Not well	0	0.0%
	Badly	0	0.0%
	Total	18	100.0%

		Count	Column N %
What do you think could be done to keep you and your friends healthy	Get more exercise	24	28.6%
	Healthier eating habits	47	55.9%
	More sporting activities	4	4.8%
	Ban / quit smoking	6	7.1%
	Good swimming pool	1	1.2%
	Drug awareness	2	2.4%
	Playing outside	4	4.8%
	Stop drinking / less drinking	2	2.4%
	To provide more info	1	1.2%
	Other	3	3.6%
	Total	84	1000.0%

Multiple

		Count	Column N %
What is the one most important thing that doesn't help you stay healthy?	Smoking	40	66.7
	Sexually transmitted infections	1	1.7
	Drugs (prescriptions and illegal)	11	18.3
	Exam stress	4	6.7
	Home life	2	3.3
	Eating disorders	2	3.3
	Alcohol	0	0.0
	Other	0	0.0
	Total	60	100.0

Multiple

		Count	Column N %
Are you doing as well as you think you can at school	Very well	44	42.7%
	Well	26	25.2%
	Average	24	23.3%
	Not well	6	5.8%
	Badly	3	2.9%
	Total	103	100.0%

		Count	Column N %
What would help you?	Nothing / unsure	1	1.4%
	One to one / smaller classes	10	14.1%
	Better control / remove distractions	10	14.1%
	Make lessons more interesting	4	5.6%
	Better / more helpful teachers	19	26.8%
	More help / support	14	19.7%
	More activities	4	5.6%
	To concentrate	3	4.2%
	Being left to get on with work in class	1	1.4%
	Bigger / tidier	4	5.6%
	More variety of subjects	1	1.4%
	Better eating habits	1	1.4%
	More / longer classes	1	1.4%
	Help with reading and writing	1	1.4%
	Unsure	1	1.4%
	Other	4	5.6%
Total	71	100.0%	

Multiple

		Count	Column N %
Would you like more activities and things to do in your area?	Loads more	33	52.4%
	More	22	34.9%
	No more	6	9.5%
	Less	2	3.2%
	Total	63	100.0%

		Count	Column N %
What do you reckon about the careers, jobs, training	Very good	25	26.3%
	Good	22	23.1%
	Average	8	8.4%
	Poor	7	7.4%
	Very poor	33	34.7%
	Total	95	100.0%

		Count	Column N %
Do you help out in your community	Every week	20	19.8%
	Every two weeks	8	7.9%
	Once a month	12	11.9%
	Never	61	60.3%
	Total	101	100.0%

		Count	Column N %
Do you help a friend or anyone in your family who has specific or special needs?	Yes	39	65.0
	No	21	35.0
	Total	60	100.0%

		Count	Column N %
Do you / who do you look after	Yes / sometimes	10	19.6%
	No	15	29.4%
	Relative	21	41.2%
	Friend	6	11.8%
	Handicapped / disabled	1	19.6%
	Total	51	100.0%

multiple

		Count	Column N %
How would you rate where you live	Really good	60	53.6%
	Good	20	17.9%
	Neither good nor bad	18	16.1%
	Bad	13	11.6%
	Really bad	1	0.9%
	Total	112	100.0%

		Count	Column N %
What would you do to make your town / area better for you?	More / better shops	9	10.7%
	More things to do / places to go	21	25.0%
	Controlling speeding traffic	3	3.6%
	More / better parks and open spaces	8	9.5%
	More sports / leisure facilities	11	13.1%
	Controlling anti social behaviour	3	3.6%
	Better / more policing	7	8.3%
	Nothing / unsure	16	19.0%
	Make it safer	7	8.3%
	Better atmosphere / environment	4	4.8%
	Other	4	4.8%
	Less police patrols	1	1.2%
	Make it cleaner	3	3.6%
	Total	84	100.0%

Multiple

		Count	Column N %
What is the best way to tell you about changes?	Internet / website	1	2.1%
	Letter / post to home	18	37.5%
	Mobile / text	4	8.3%
	Email	8	16.7%
	Media	4	8.3%
	Face to face	2	4.2%
	Through school	5	10.4%
	Newsletters / leaflets	15	31.2%
	Unsure	2	4.2%
	Total	48	100.0%

Multiple